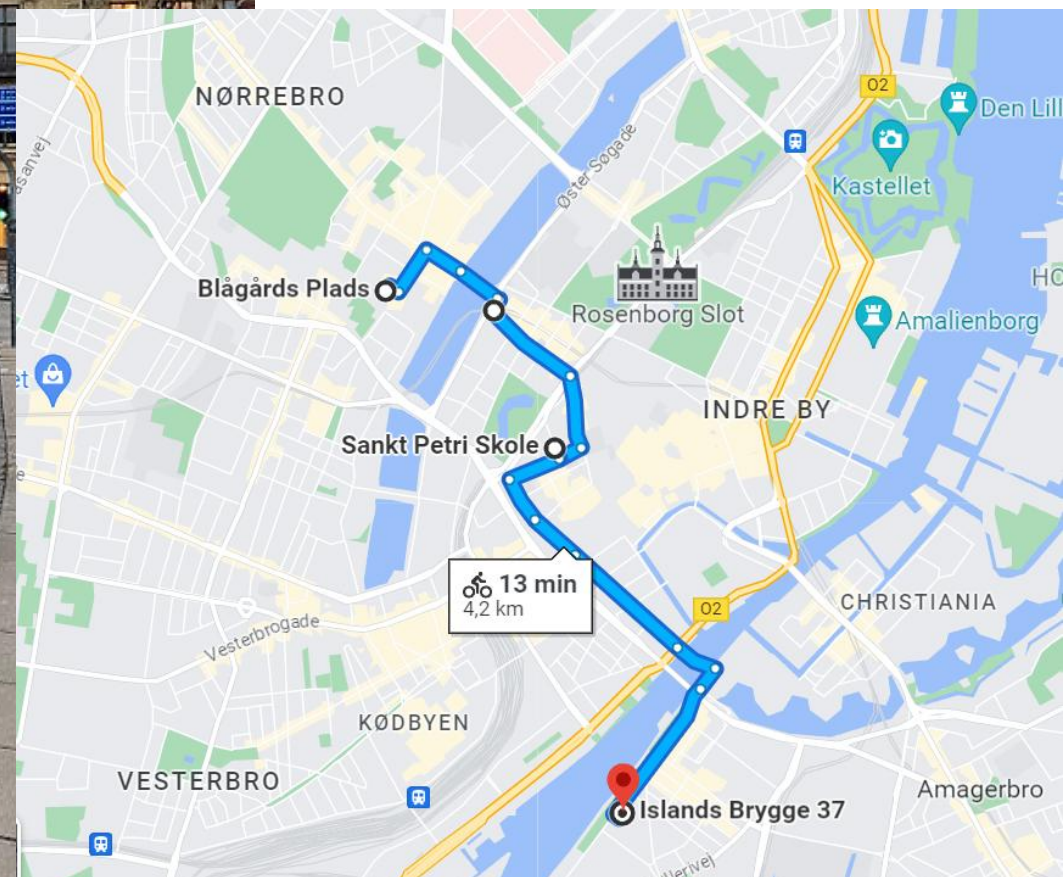


Sustainable City Planning

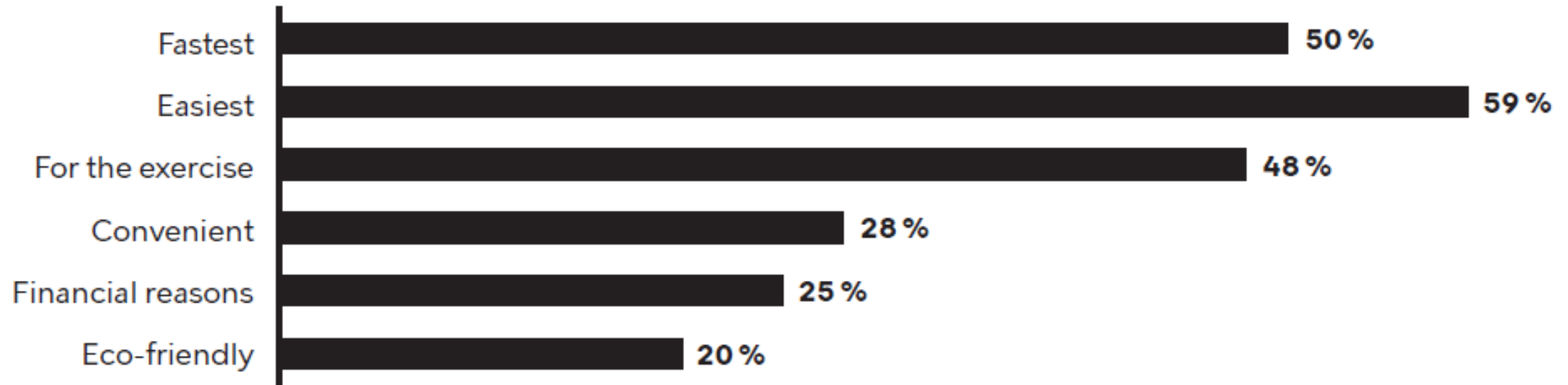
Copenhagen City of cyclists

Oskar Jäger Funk, Urban planner
Bicycle & walking Team, City of Copenhagen

A morning commute



Copenhageners' reasons to cycle

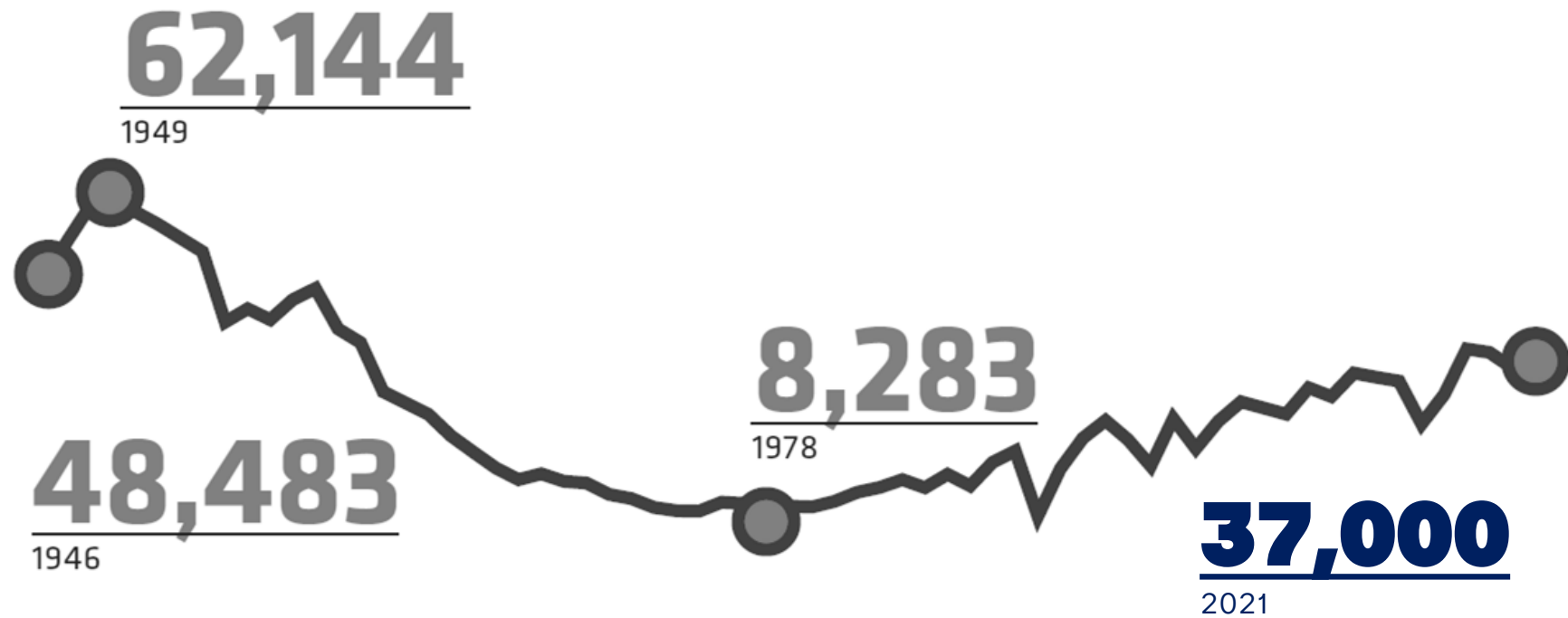


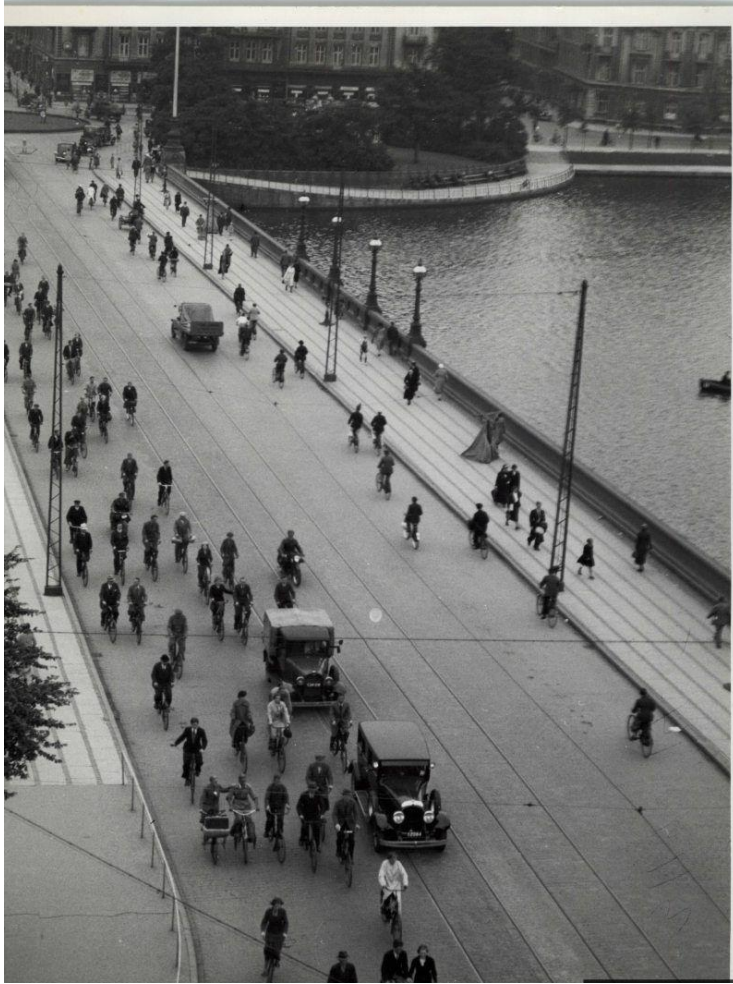






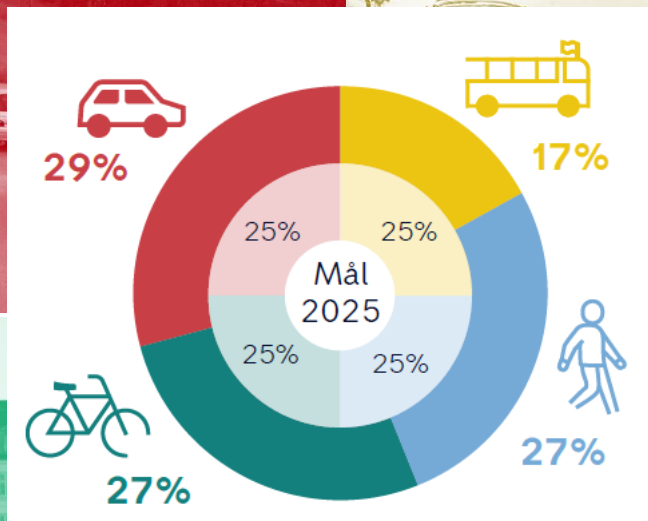
Cyclists at Queen Louise's Bridge over time



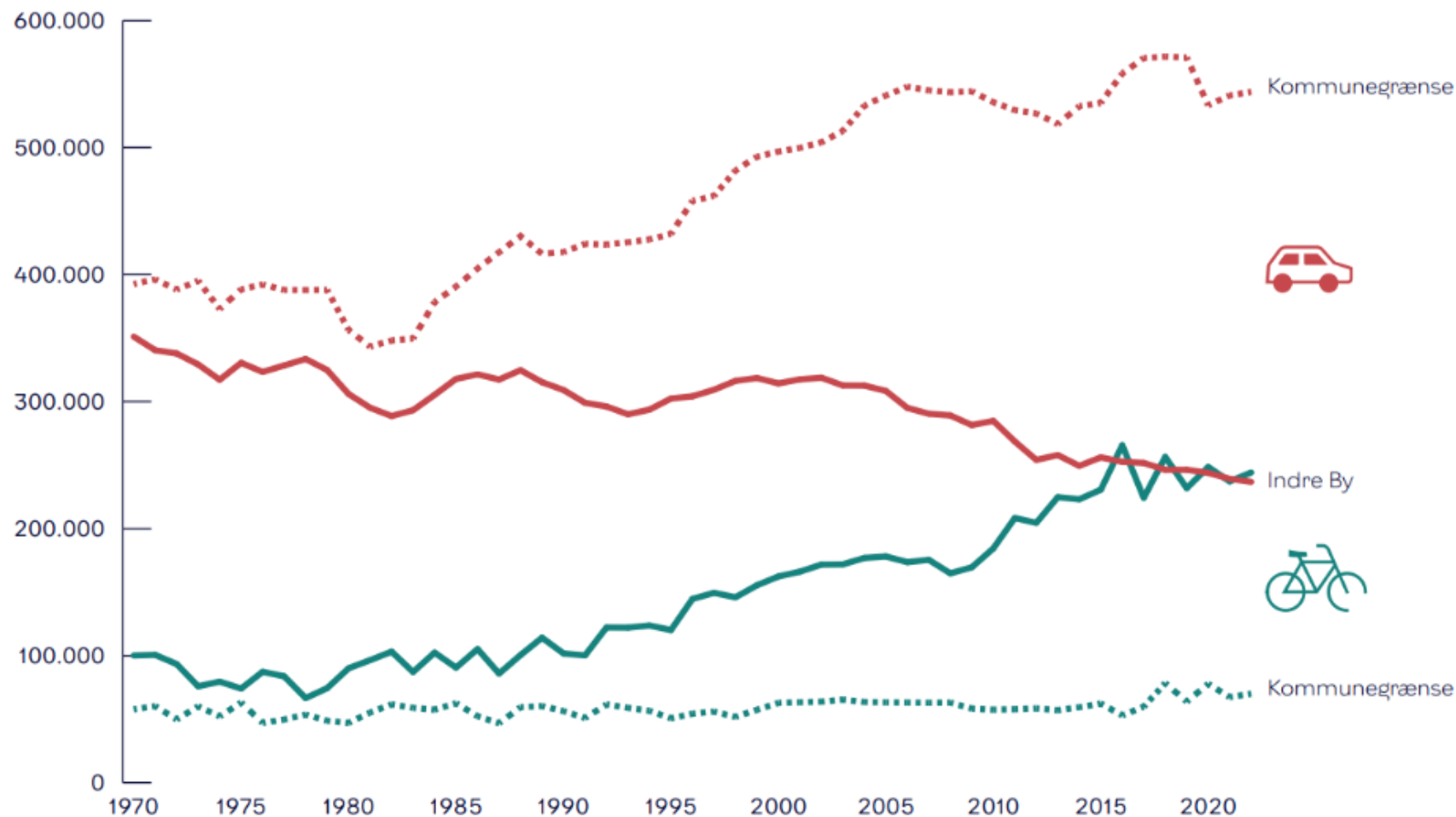


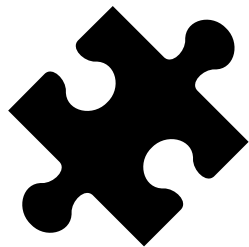




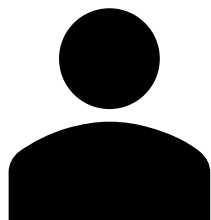


Traffic flow in Copenhagen and across the municipal border

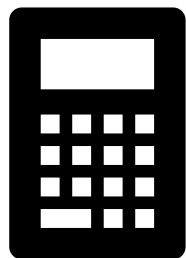




"Holistic" Approach:
Cycling is a means, not a goal



User-oriented Approach:
Safe, fast and comfortable from A to B



Data-based Approach:
Estimate, calculate, evaluate





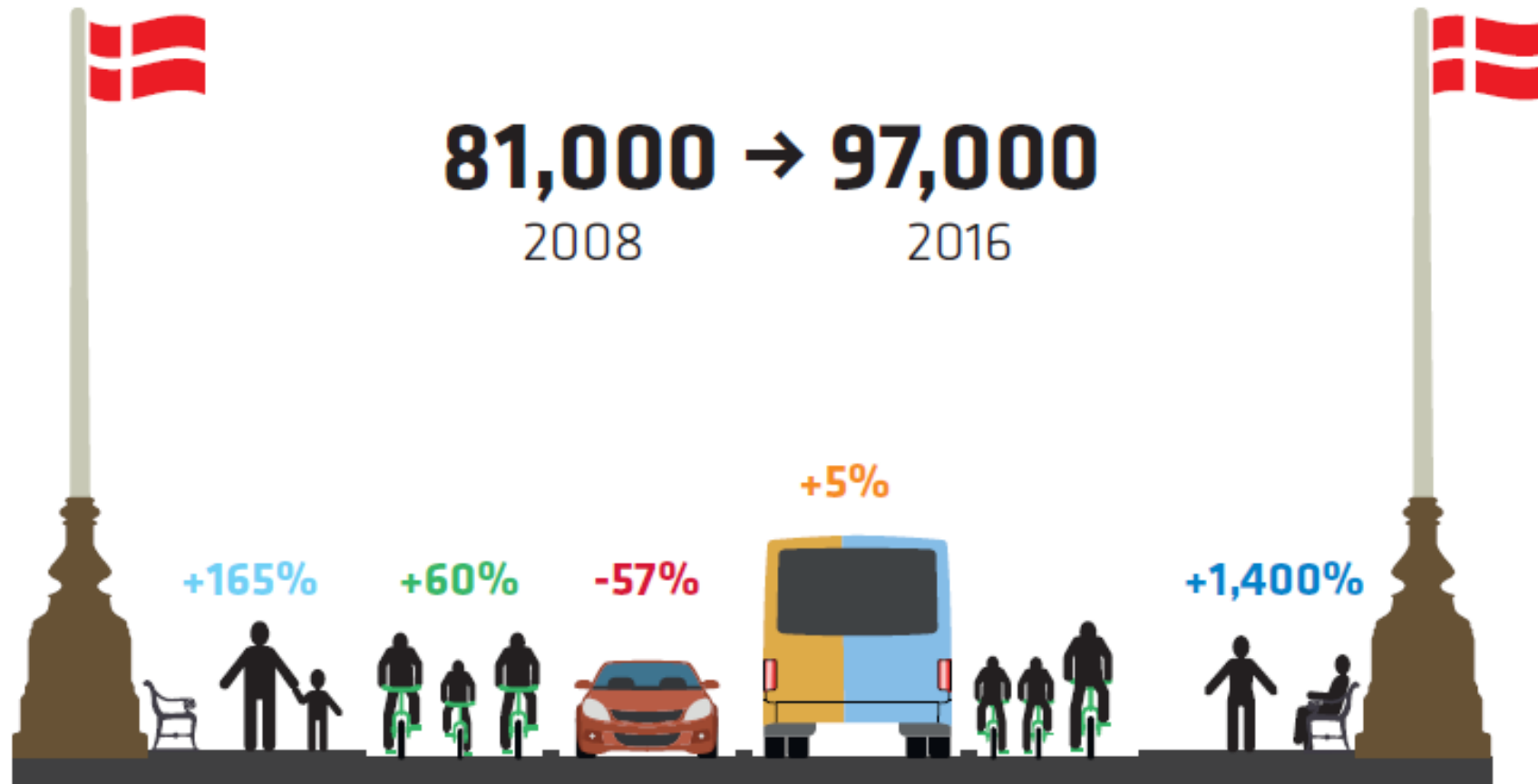
Copenhagen's approach to cycling

- **Holistic view of mobility**
 - Cycling to make a better city and increase citizens' life quality
 - Planning for dense, mixed cities
- **Cycling: a serious means of transportation**
 - Continuous investments
 - Allocation of space
 - Administrative priority





Redesigning Queen Louises Bridge



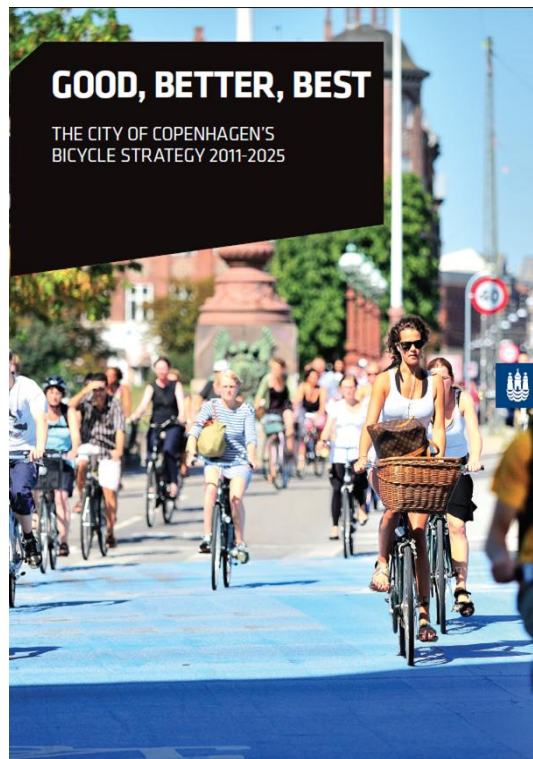
Growth in number of persons per transport mode on Dronning Louises Bridge from 2008- 2016.

Strategic plans, political visions and goals for cycling and mobility



Dedicated planning for cycling

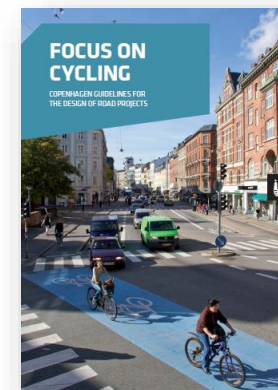
Why?

What and where?




How?

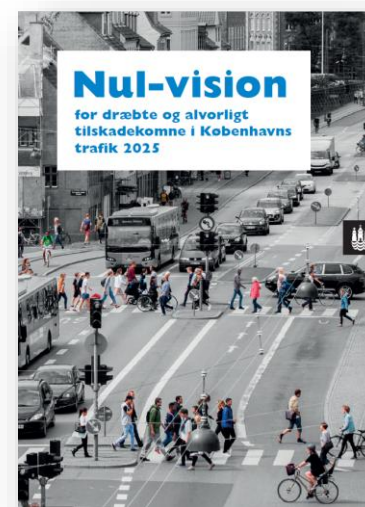
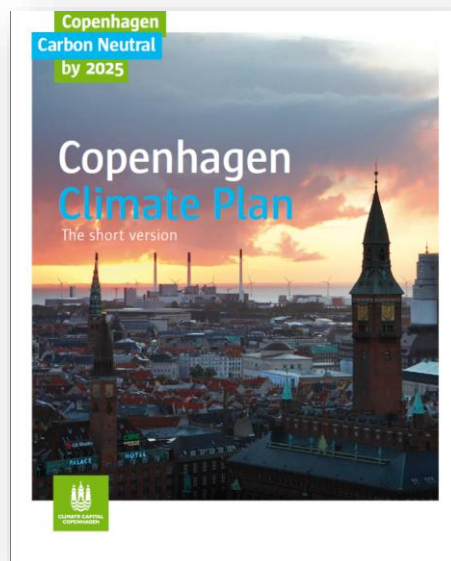



Status?

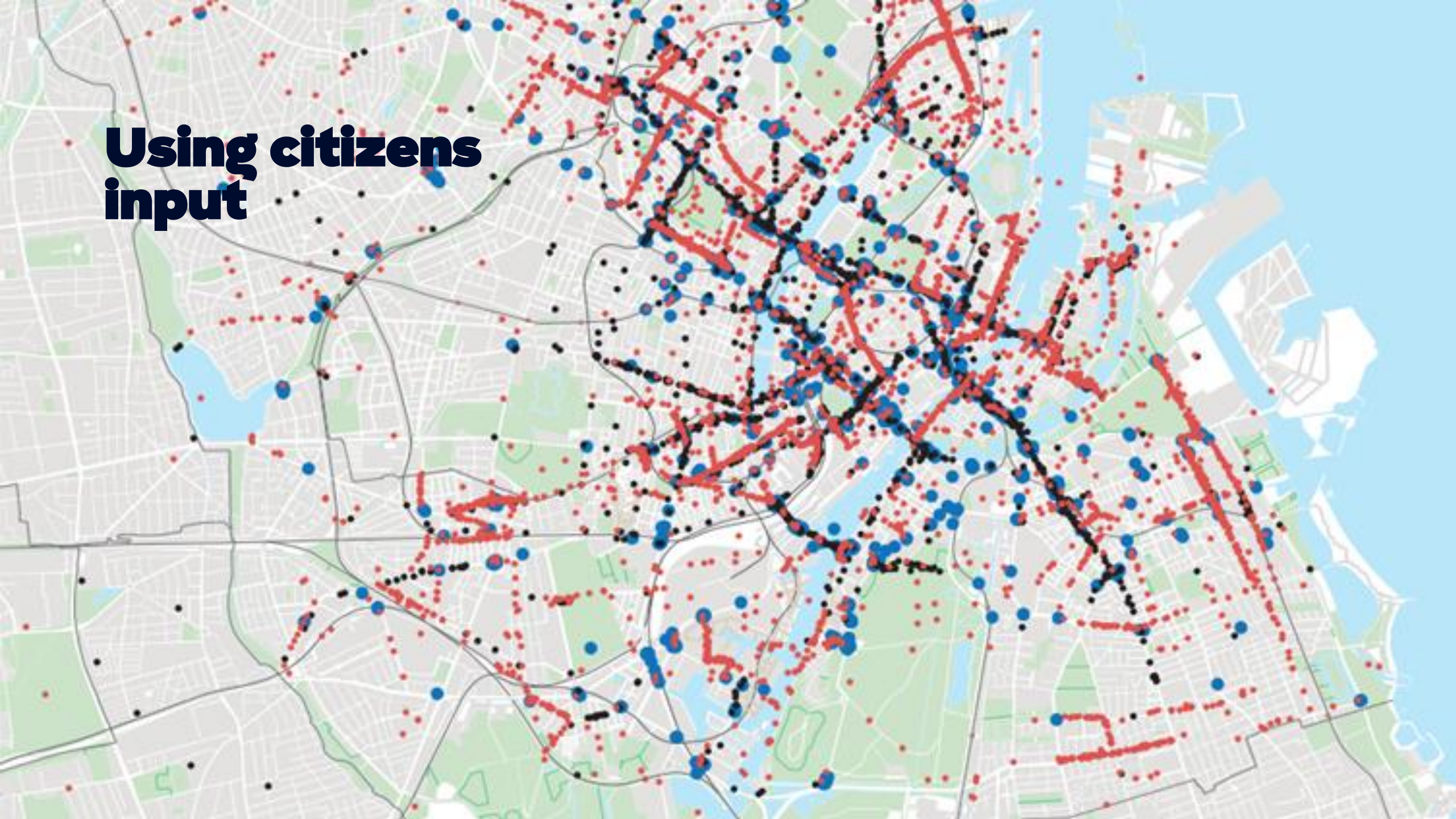



Cycling integrated in overall strategic planning

- Municipal Plan 2019
- Climate Plan KBH 2025
- Vision Zero 2025



Using citizens input



Cycle Superhighways

in the Capital Region, Denmark





MUNICIPALITY ROAD AUTHORITY ON MUNICIPAL ROAD
 REGION NO ROAD AUTHORITY
 STATE ROAD AUTHORITY ON STATE ROAD

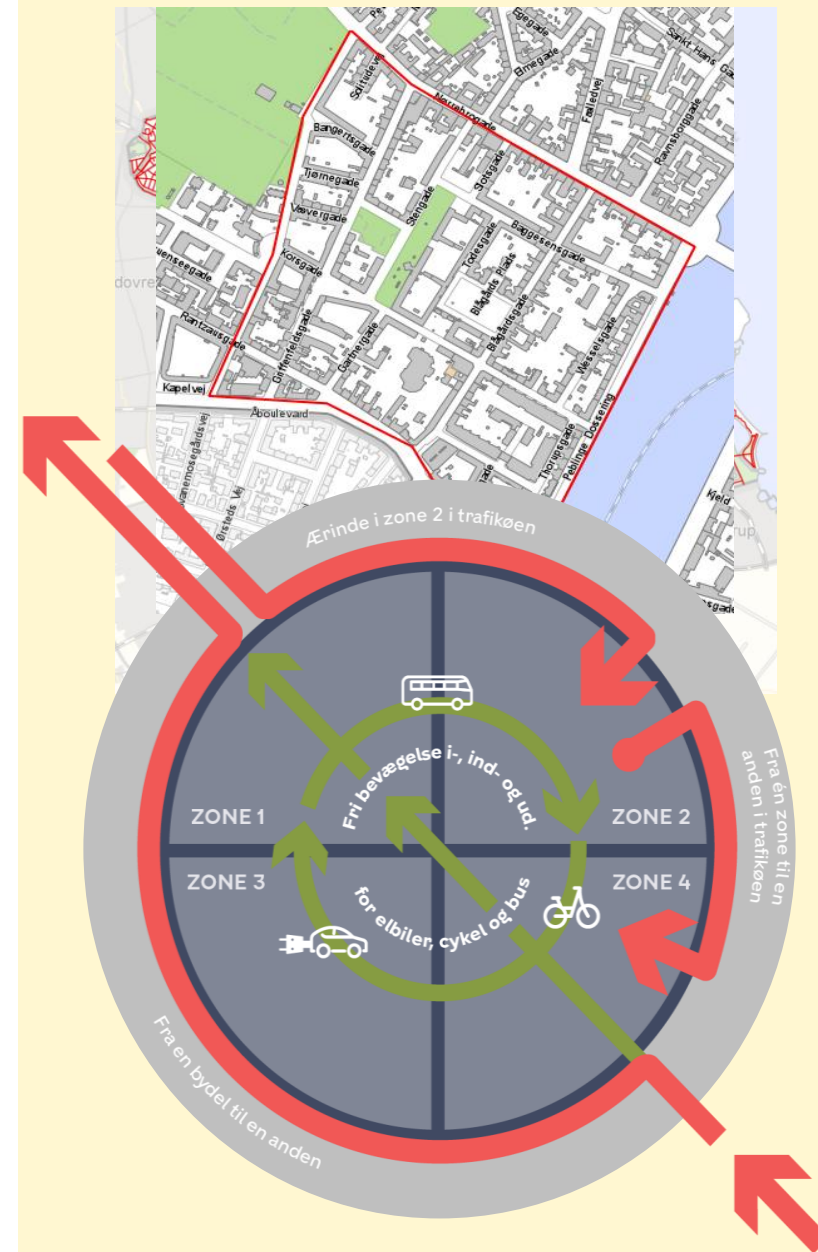


The main issue?



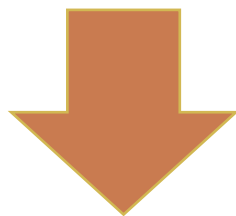
Circulation plans / Traffic Islands

- Reducing shortcuts and circulation of cars in local neighbourhoods
- Principle for solution – Only implemented in one neighbourhood so far
- Questions of scale – when are they efficient in reducing CO₂?

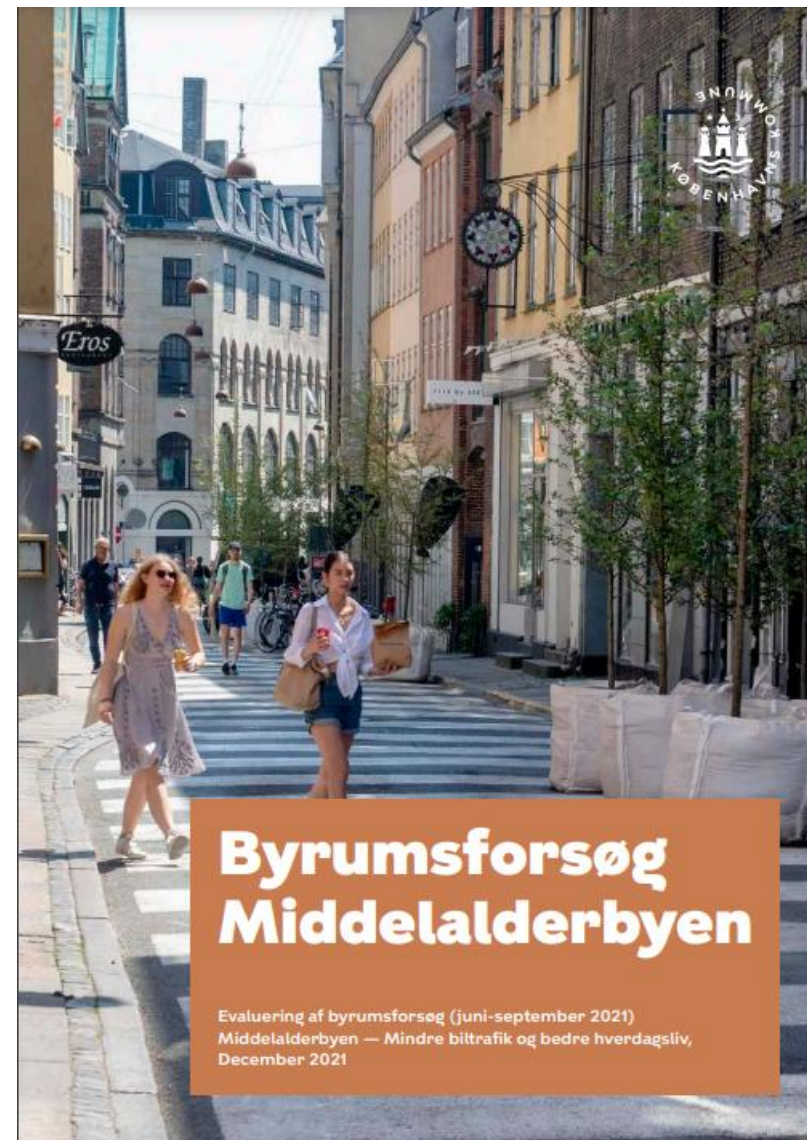


Redesigning the medieval city

Large scale experiment with urban space



Radical reprioritization of space



the AMERICAN
PIE
CO.

33 AMME
EMMA GO

THIRDHAND

Eros

FARAOS CIGARETTER

2.2m

Ensrettet

undtaget

P
P-betaling
skiltet
7-17
Reserveret til
mikrobusser
på gade
nummer 10
Øvrig tid
P-betalingssone

2 M
MURERSERVICE
TRAFIC
RENAULT
DK
BN 54 741

Klosterstræde



IRDHAND
VINTAGE

Eros
RESTAURANT

FARAO'S CIGARETTES

THIRDHAND
VINTAGE

SHOES EMMA
SHOES EMMA
EMMAGO SHOES
SHOES EMMA
EMMAGO SHOES



Thank you!

Oskar Jäger Funk

la2x@kk.dk

www.linkedin.com/in/oskarfunk/

www.kk.dk/cityofcyclists

